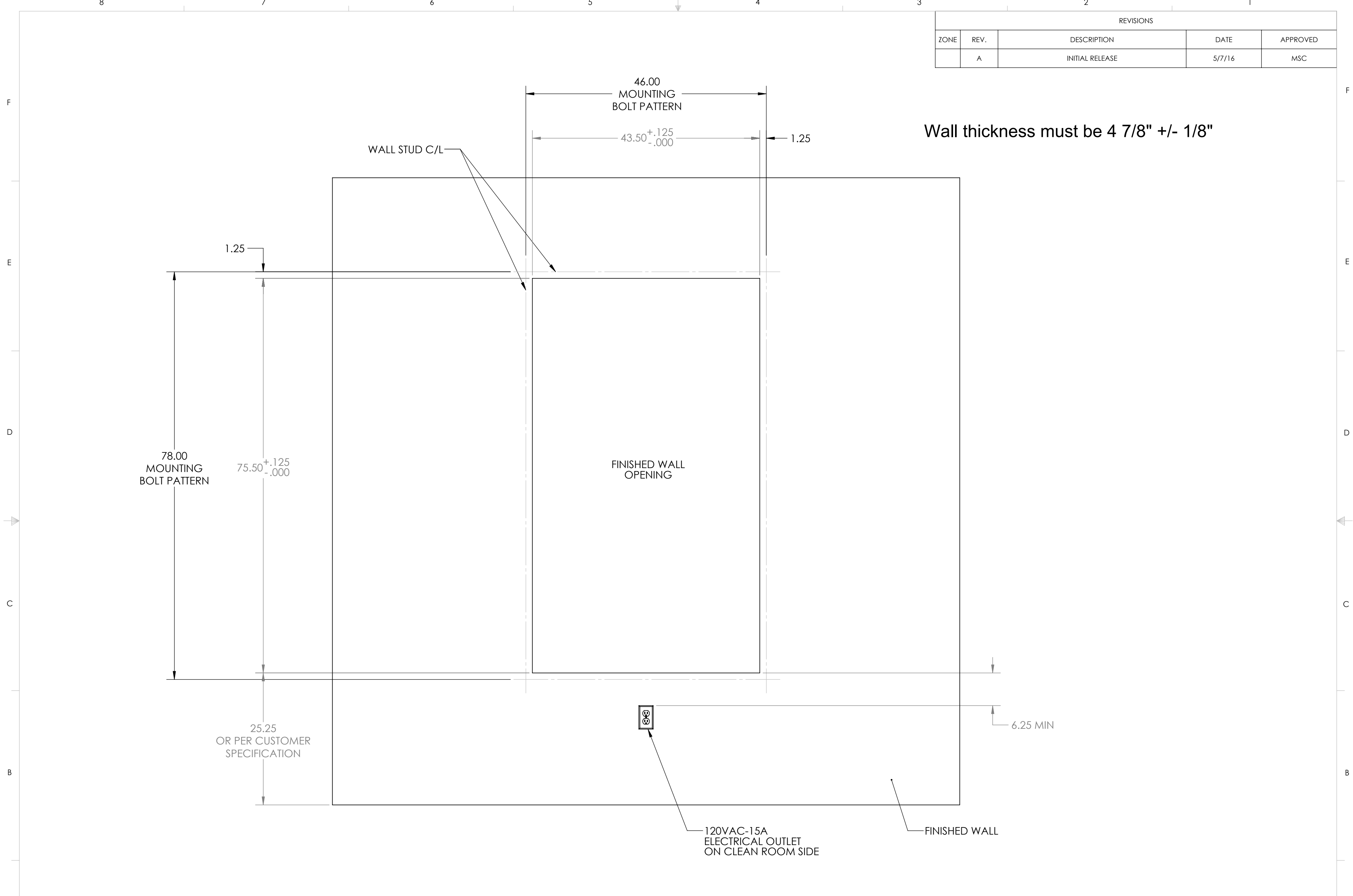


REVISIONS				
ZONE	REV.	DESCRIPTION	DATE	APPROVED
	A	INITIAL RELEASE	5/7/16	MSC



- NOTES:
1. WALL STUDS SHOULD BE CENTERED ON THE BOLT PATTERN CENTERLINES TO SUPPORT THE PASS-THRU WINDOW
  2. 120VAC-15A ELECTRICAL OUTLET IS REQUIRED TO POWER THE UNIT
  3. 6-FOOT POWER CORD IS SUPPLIED WITH THE WINDOW
  4. OVERALL WALL THICKNESS SHOULD BE 4.875 +/- .125"

**PROPRIETARY AND CONFIDENTIAL**  
 THE INFORMATION CONTAINED IN THIS DRAWING IS THE SOLE PROPERTY OF CLEAN ROOM DEVICES, LLC. ANY REPRODUCTION IN PART OR AS A WHOLE WITHOUT THE WRITTEN PERMISSION OF CLEAN ROOM DEVICES, LLC IS PROHIBITED.

UNLESS OTHERWISE SPECIFIED:		NAME	DATE	CLEAN ROOM DEVICES, LLC
DIMENSIONS ARE IN INCHES		DRAWN	MSC	
TOLERANCES:		CHECKED		TITLE: <b>FINISHED WALL OPENING, CRD336</b>
FRACTIONAL ±1/16		ENG APPR.		
ANGULAR: MACHINED ±0.5° BEND ±2°		MFG APPR.		
TWO PLACE DECIMAL ±.01 THREE PLACE DECIMAL ±.005		Q.A.		COMMENTS:
INTERPRET GEOMETRIC TOLERANCING PER: ANSI Y14.5				
MATERIAL		SEE NOTES		
FINISH		SEE NOTES		
NEXT ASSY	USED ON	DO NOT SCALE DRAWING		
APPLICATION				

SIZE	DWG. NO.	REV
<b>C</b>	<b>336-001</b>	<b>A</b>
SCALE: 1:12, WEIGHT:		SHEET 1 OF 1