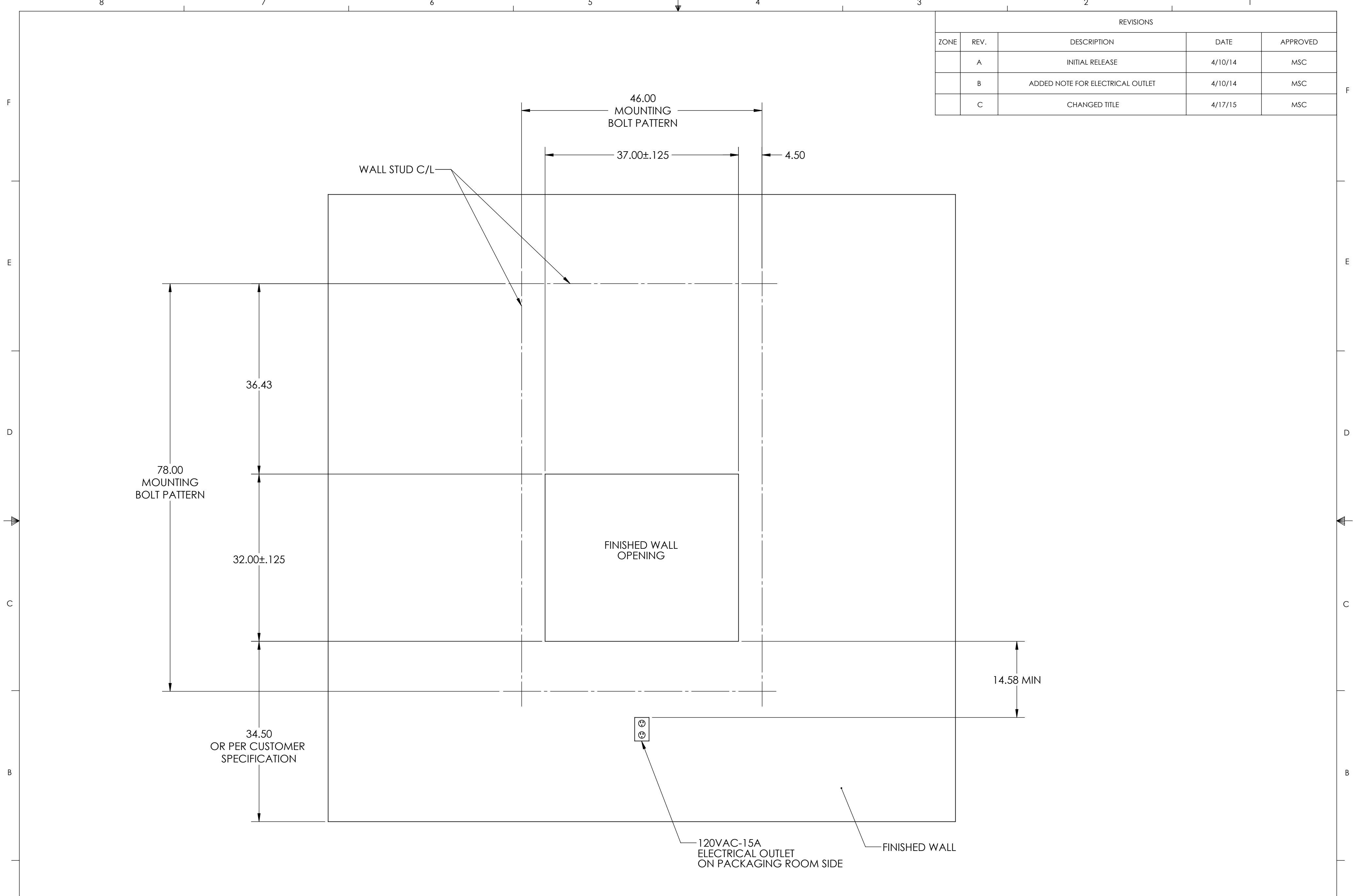


REVISIONS				
ZONE	REV.	DESCRIPTION	DATE	APPROVED
	A	INITIAL RELEASE	4/10/14	MSC
	B	ADDED NOTE FOR ELECTRICAL OUTLET	4/10/14	MSC
	C	CHANGED TITLE	4/17/15	MSC



- NOTES:
1. WALL STUDS SHOULD BE CENTERED ON THE BOLT PATTERN CENTERLINES TO SUPPORT THE PASS-THRU WINDOW
 2. 120VAC-15A ELECTRICAL OUTLET IS REQUIRED TO POWER THE UNIT
 3. 6-FOOT POWER CORD IS SUPPLIED WITH THE WINDOW

PROPRIETARY AND CONFIDENTIAL
 THE INFORMATION CONTAINED IN THIS DRAWING IS THE SOLE PROPERTY OF CLEAN ROOM DEVICES, LLC. ANY REPRODUCTION IN PART OR AS A WHOLE WITHOUT THE WRITTEN PERMISSION OF CLEAN ROOM DEVICES, LLC IS PROHIBITED.

UNLESS OTHERWISE SPECIFIED:		NAME	DATE	CLEAN ROOM DEVICES, LLC
DIMENSIONS ARE IN INCHES		DRAWN	MSC	
TOLERANCES:		CHECKED		TITLE: FINISHED WALL OPENING, CRD330
FRACTIONAL ±1/16		ENG APPR.		
ANGULAR: MACHINED ±0.5° BEND ±2°		MFG APPR.		
TWO PLACE DECIMAL ±.01 THREE PLACE DECIMAL ±.005		Q.A.		SIZE DWG. NO. REV
INTERPRET GEOMETRIC TOLERANCING PER: ANSI Y14.5		COMMENTS:		C 330-021 C
MATERIAL SEE NOTES				SCALE: 1:12 WEIGHT: SHEET 1 OF 1
NEXT ASSY	USED ON	FINISH SEE NOTES		
APPLICATION		DO NOT SCALE DRAWING		