



# **CRD510 3-JAW TUBE EXPANDER**

## **OPERATIONS MANUAL**



ORIGINAL INSTRUCTIONS  
VERSION 1.4  
LAST EDITED 09.16.2022  
*cleanroomdevices.com*

# Table of Contents

- Title Page.....1
- Table of Contents.....2
- 1.0 General Product & Safety Information.....3
  - 1.1 Product Information
  - 1.2 Safety Information
- 2.0 Installation.....5
  - 2.1 Air Supply
- 3.0 Operation.....6
  - 3.1 Jaw Alignment and Collar Position
  - 3.2 Tube Expanding
  - 3.3 Jaw removal and installation
- 4.0 Troubleshooting.....9
- 5.0 Maintenance.....9
  - 5.1 Periodic Cleaning (annually)
- 6.0 Product Specifications.....10
- 7.0 Durometer Scale.....10
- 8.0 Warranty.....11
  - 8.1 Warranty
  - 8.2 Warranty period

## 1.0 General Product & Safety Information

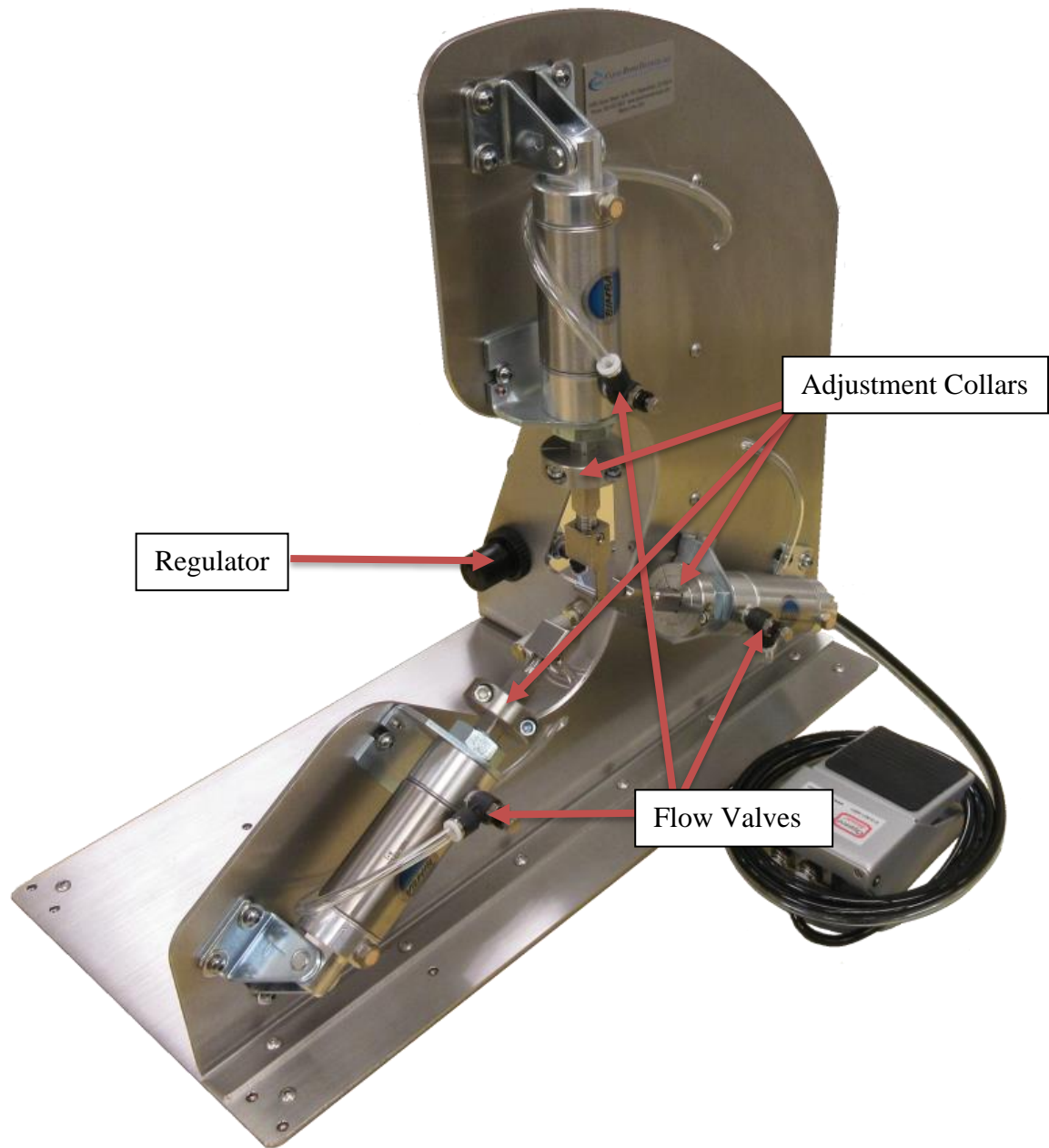


Figure A

### 1.1 Product Information

- The expander unit is designed to expand most types of soft tubing, primarily silicone, latex, and soft (40-50) durometer PVC.
- The minimum/maximum inside tube diameter is 3/32" to 1".
- The expander jaws are designed to meet most applications.

- The units design allows for simple operator adjustment.
- The serial number is located on the bottom, rear of the unit.



## 1.2 Safety Information

- This product uses an air cylinder and foot pedal to pneumatically actuate the expanding jaws. The unit is not intended to expand anything other than flexible tubing.
- The desired air supply should be free of moisture/contaminates, and a minimum 100 psi facility air supply is recommended. It is also recommended that a suitable filter/regulator be installed onto the supply line prior to the unit to preserve the life expectancy of the air components.
- Safety glasses should be worn at all times while operating the unit.

### **CRD510 3-JAW TUBING EXPANDER SAFETY NOTICE**

**PLEASE READ CAREFULLY BEFORE CONTINUING**

## **Warning**

**The tubing expander should only be operated by trained, qualified personnel who have read and understand this manual.**

The owner of this CRD510 is responsible for training all personnel to properly operate this unit. Failure to follow instructions may result in serious personal injury.

### 1.3 *Lifting & Moving Safety*

- Due to the weight of the unit (approximately 27 lbs/12.3 kg), the unit should always be moved or repositioned by two (2) people to reduce the possibility of injury. (Figure B)
- When not in use, the unit should always be stored on a flat, stable surface.

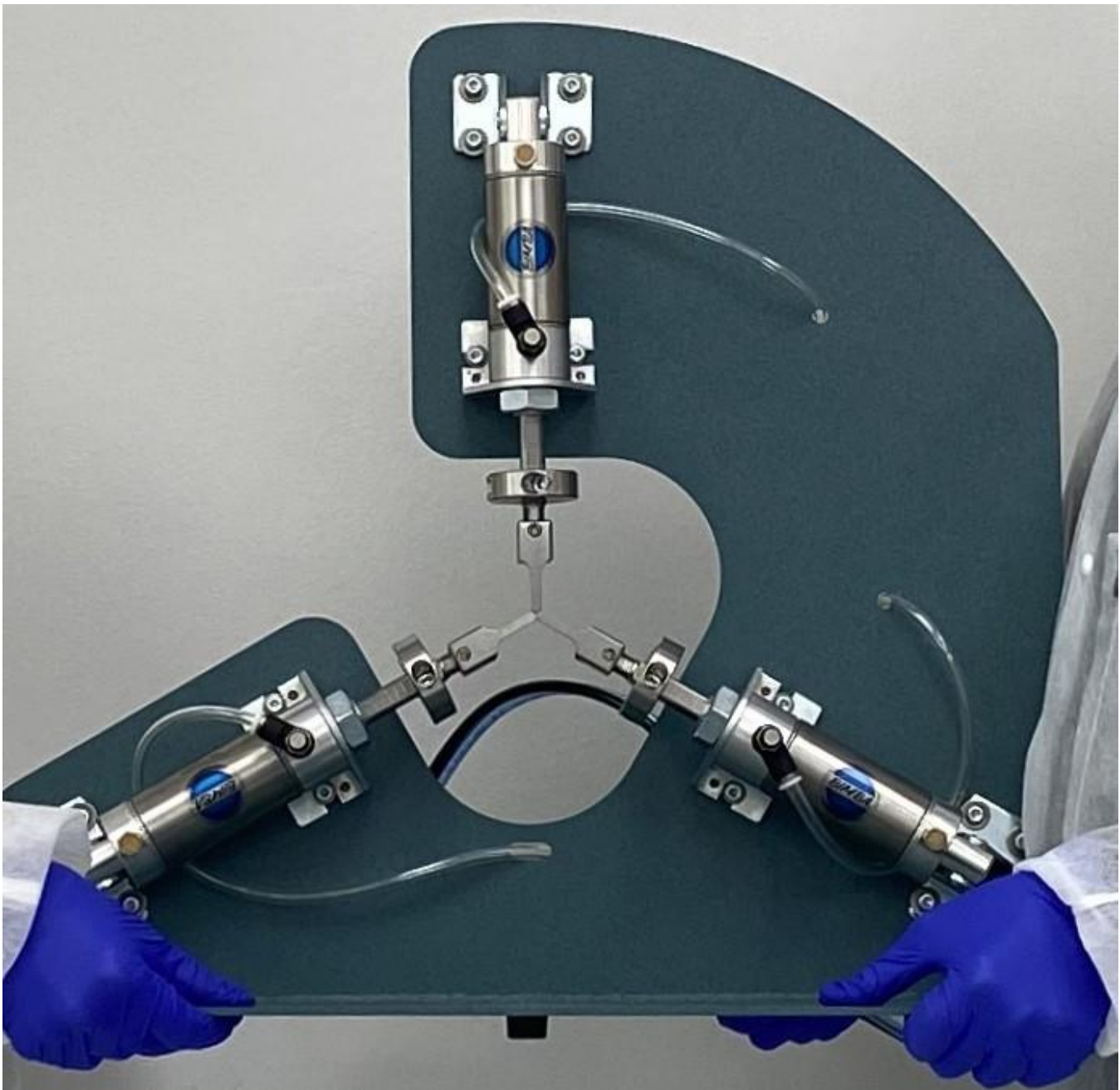


Figure B

## 2.0 Installation

Ensure all five (5) rubber feet are completely stabilized on your work surface prior to applying air pressure to the unit.

### 2.1 Air Supply

- Connect a 1/4" air supply hose to the fitting found on the regulator. The air supply should be free of moisture and contaminants. Adjust the regulator within the range of 40-80 psi for operation. Lower than 40 psi may affect the unit's ability to stretch the tubing properly with even pressure. Running pressures higher than 80 psi can damage the jaws.

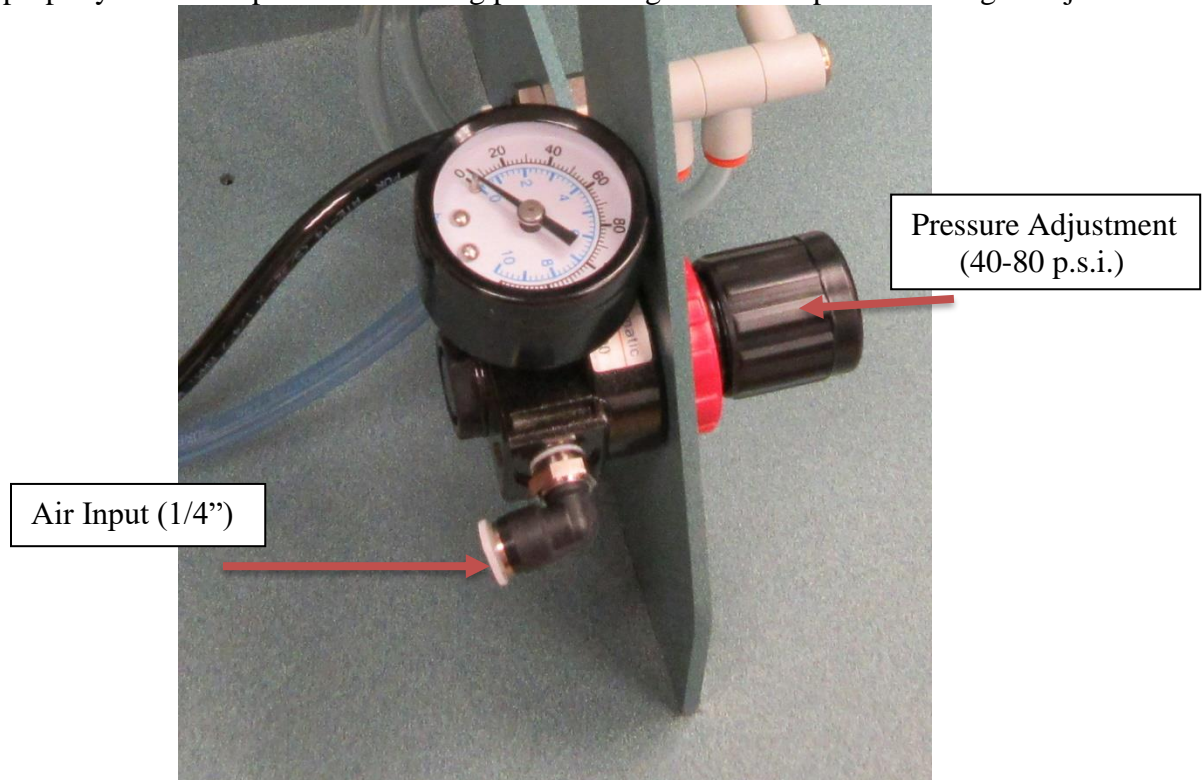


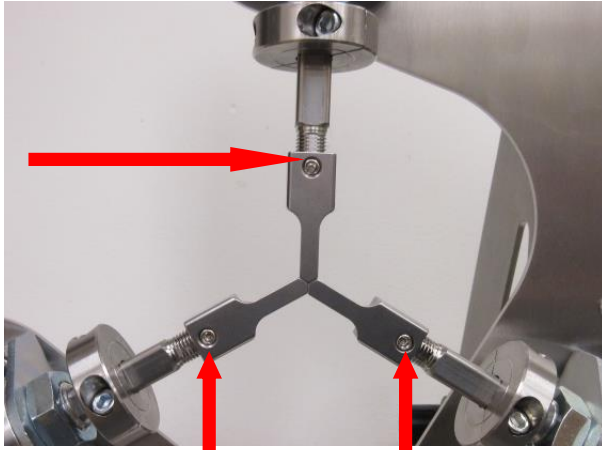
Figure C

## 3.0 Operation

### 3.1 Jaw Alignment and Collar Position

- Start by ensuring the jaws are properly aligned with each other. Maintaining this alignment is critical to the correct operation of this expander.
- Break loose the set screws on all three (3) jaws using a 1/8" hex wrench. **(Figure 1)**
- Adjust the jaws by letting all three (3) jaws come together (they will somewhat self-align) twisting the jaw slightly by hand or using an 11/16 open end wrench will ensure that the jaws are properly seated together. **(Figure 2)**
- Once aligned use the 1/8" hex wrench to tighten all three (3) set screws in the jaws. **(Figure 1)**

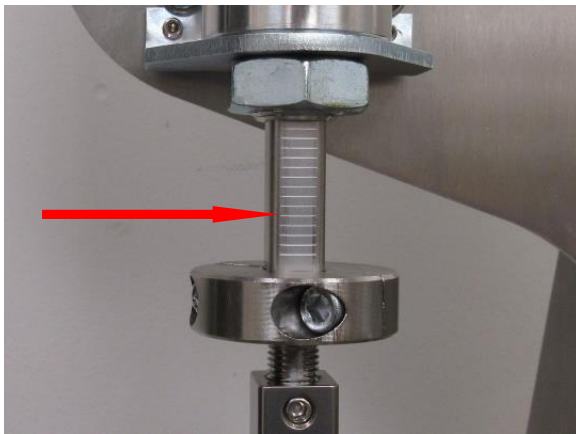
- The jaws should form a tight circle when properly aligned, no gaps between jaws. (See **figure 2**)
- The graduations on the cylinders represent approximately 0.072 of an inch. (**Figure 3**)
- Break loose the two (2) bolts on each of the three (3) stop collars using a 3/16" hex wrench. Position the stop collars at the same indicator mark on all three (3) cylinder shafts and retighten the bolts. (**Figure 4**)
- Repeat this process until the desired tube opening is met.



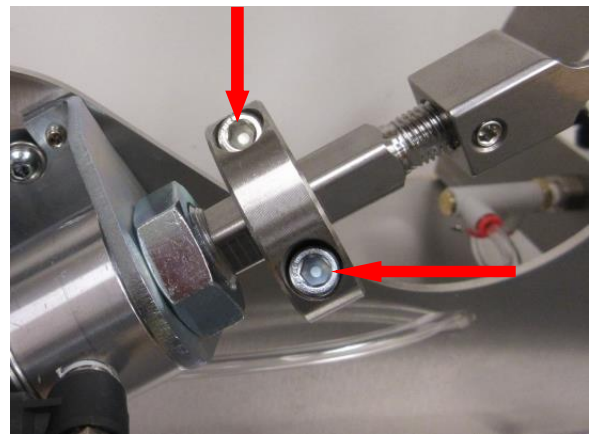
**Figure 1**  
Set screws



**Figure 2**  
Proper Jaw alignment



**Figure 3**  
Cylinder graduations



**Figure 4**  
Stop collar bolts

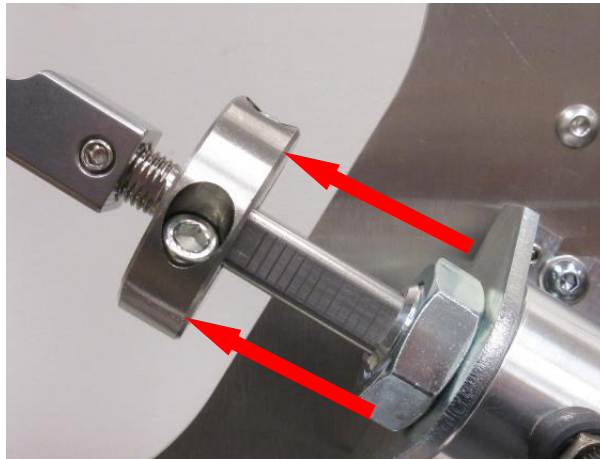
### 3.2 Tube Expanding

- Place the desired tubing over the ends of ***all three (3)*** expander jaws to the depth needed to allow the barb to be inserted properly.
- Actuate the expanding motion by fully depressing the foot pedal, ensuring the operator keeps their hands clear of the expansion center to avoid injury if the foot pedal is released.

- Once the tube is expanded satisfactorily, push the fitting through the jaws and into the tubing.
- The tubing and fitting may need to be spooned off of the side of the jaws rather than pushed through the center, depending on fitting size and shape.

### 3.3 *Jaw removal and installation*

- Jaws will need to be changed to accommodate different sizes of tubing, and/or different fittings.
- Remove all three set screws on the jaws using a 1/8" hex wrench. **(Figure 1)**
- Using a 3/16" hex wrench, loosen the two (2) bolts on all three (3) stop collars and slide them forward on the cylinder shaft to where the threads start. Retighten the bolts on all three (3) stop collars using the 3/16" hex wrench. **(Figure 5)**



**Figure 5**  
**Stop collar shown all the way forward**

- Activate the expander by pressing on the foot pedal and keep it compressed while performing the jaw removal and installation. When changing the jaws, keep hands clear of the expansion center to avoid injury if the foot pedal is accidentally released. **(Figure 6)**



**Figure 6**



### Jaws shown in the fully open position

- Remove the jaws from each cylinder shaft (turning the jaws counter clockwise).
- While keeping the expander activated, with your foot on the foot pedal, twist on the new jaws onto each cylinder. Start the set screw into each jaw but do not tighten.
- De-activate the expander by taking your foot off of the foot pedal.
- Ensure that the jaws are aligned properly, as shown in **Figure 1 & 2**. Using a 1/8” hex wrench, tighten the set screws on each jaw after you have the jaws properly aligned. **(Figure 2)**
- Re-adjust the stop collars to the desired opening you need and tighten the bolts. **(Figure 3)** See Section 3.2 for details.

#### 3.4 Ordering Additional or Replacement Jaw Sets

- To order additional jaw sets, please specify the part number CD005-D-L (Example: CD005-.188x.375) where D is the jaw set diameter, and L is the desired length. Also, add the suffix “S” for straight jaws or the suffix “T” for tapered jaws.
- To order replacement jaws, please call in the part number or measure your current jaws and provide the D (jaw set diameter), L (the length of the jaw) and S or T (straight or tapered option).

### Important Note:

The CD005-D-L(T/S) jaws used by the 3-jaw expander models CRD500, CRD500SS and CRD510 are NOT compatible or interchangeable with the 4-jaw expander model CRD520.

## 4.0 Troubleshooting

Operating Error	Action
Unit does not operate.	<ol style="list-style-type: none"> <li>1. Check the facility air connection.</li> <li>2. Check all air hose connections on the unit.</li> <li>3. Verify the regulator is set between 40-80 p.s.i.</li> </ol>
Jaws do not spread.	<ol style="list-style-type: none"> <li>1. Ensure no obstructions are keeping the jaws from expanding.</li> <li>2. Completely depress the foot pedal to actuate.</li> <li>3. Verify that the flow valves are open.</li> </ol>
Flexible tubing is splitting/tearing.	<ol style="list-style-type: none"> <li>1. Ensure the tubing being expanded does not exceed the performance of the material.</li> <li>2. Ensure the jaws have been sized correctly for the tubing inside diameter (I.D.).</li> <li>3. Verify facility air supply p.s.i. or unit pressure adjustment.</li> </ol>

## 5.0 Maintenance

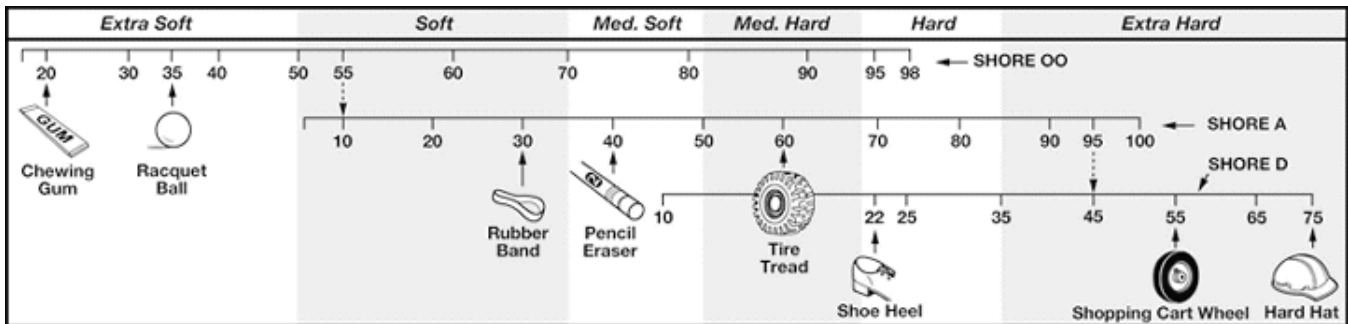
### 5.1 Periodic Cleaning (annually, or as needed)

- Wipe down outer surfaces with alcohol, septihol or mild detergents as required.
- Jaws will need to be changed to accommodate differing sizes of tubing and/or fittings. Please see Section 3.0 Operations for details regarding changing and aligning jaws.

## 6.0 Product Specifications

Unit Weight	27 LBS / 12.2 KG
Overall Dimensions	20.5 in lg. x 10.5in. w. x 19.5 in. ht.
Minimum/Maximum PSI	40 PSI / 80 PSI

## 7.0 Durometer Scale



## **8.0 Warranty**

### *8.1 Warranty*

The manufacturer warrants the product manufactured by it, when properly installed, operated, applied and maintained in accordance with the procedures and recommendations outlined in the manufacturer's operation manual, to be free from defects in material or workmanship for a period as specified below, provided such defect is discovered and brought to the manufacturer's attention within the stated warranty period.

The manufacturer will repair or replace any product or part determined to be defective by the manufacturer within the warranty period, provided such defect occurred in the normal service and not as a result of misuse, abuse, neglect or accident. Normal maintenance items requiring routine replacement are not warranted. The warranty covers parts and labor for the warranty period unless otherwise specified. Repair or replacement shall be made at the factory or the installation site, at the sole discretion of the manufacturer. Any service performed on the product by anyone other than the manufacturer must first be authorized by the manufacturer.

Unauthorized service voids the warranty and any resulting charge or subsequent claim will not be paid. Products repaired or replaced under warranty shall be warranted for the unexpired portion of the warranty applying to the original product.

The foregoing is the exclusive remedy of any buyer of the manufacturer's product. The maximum damages liability for the manufacturer is the original purchase price of the product or part.

THE FOREGOING WARRANTY IS EXCLUSIVE AND IN LIEU OF ALL OTHER WARRANTIES, WHETHER WRITTEN, ORAL, OR STATUTORY, AND IS EXPRESSLY IN LIEU OF THE IMPLIED WARRANTY OF MERCHANTABILITY AND THE IMPLIED WARRANTY OF FITNESS FOR A PARTICULAR PURPOSE. THE MANUFACTURER SHALL NOT BE LIABLE FOR LOSS OR DAMAGE BY REASON OF STRICT LIABILITY IN TORT OR ITS NEGLIGENCE IN WHATEVER MANNER INCLUDING DESIGN, MANUFACTURE OR INSPECTION OR THE EQUIPMENT OR ITS FAILURE TO DISCOVER, REPORT, REPAIR, OR MODIFY LATENT DEFECTS INHERENT THEREIN.

THE MANUFACTURER, HIS REPRESENTATIVE OR DISTRIBUTOR SHALL NOT BE LIABLE FOR LOSS OF USE OF THE PRODUCT OR OTHER INCIDENTAL OR CONSEQUENTIAL COSTS, EXPENSES, OR DAMAGES INCURRED BY THE BUYER, WHETHER ARISING FROM BREACH OF WARRANTY, NEGLIGENCE OR STRICT LIABILITY IN TORT.

The manufacturer does not warrant any product, part, material, component, or accessory manufactured by others and sold or supplied in connection with the sale of manufacturer's products.

### *8.2 Warranty Period*

Parts and labor are for ninety (90) days from the date of shipment from the factory. Freight to the factory on units that the manufacturer requests to be returned shall be paid by the purchaser, all return freight to be paid by the manufacturer; means of transportation to be specified by the manufacturer.

*For additional information contact: [www.cleanroomdevices.com](http://www.cleanroomdevices.com)*

Clean Room Devices, Inc.  
10855 Dover Street, Suite 100  
Westminster, CO 80021  
303-438-0853