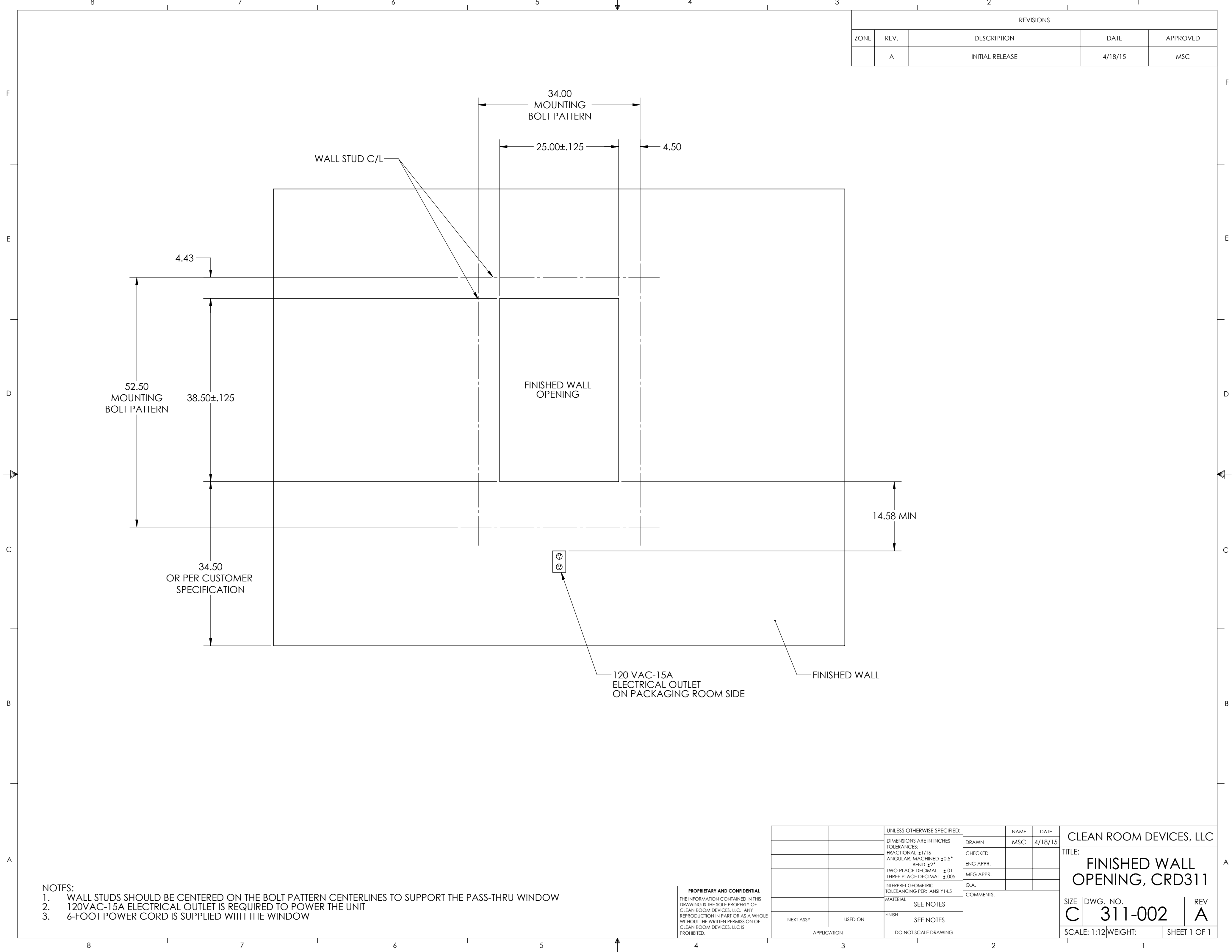


REVISIONS				
ZONE	REV.	DESCRIPTION	DATE	APPROVED
	A	INITIAL RELEASE	4/18/15	MSC



- NOTES:
1. WALL STUDS SHOULD BE CENTERED ON THE BOLT PATTERN CENTERLINES TO SUPPORT THE PASS-THRU WINDOW
  2. 120VAC-15A ELECTRICAL OUTLET IS REQUIRED TO POWER THE UNIT
  3. 6-FOOT POWER CORD IS SUPPLIED WITH THE WINDOW

**PROPRIETARY AND CONFIDENTIAL**  
 THE INFORMATION CONTAINED IN THIS DRAWING IS THE SOLE PROPERTY OF CLEAN ROOM DEVICES, LLC. ANY REPRODUCTION IN PART OR AS A WHOLE WITHOUT THE WRITTEN PERMISSION OF CLEAN ROOM DEVICES, LLC IS PROHIBITED.

UNLESS OTHERWISE SPECIFIED:		NAME	DATE	CLEAN ROOM DEVICES, LLC	
DIMENSIONS ARE IN INCHES		DRAWN	MSC		4/18/15
TOLERANCES:		CHECKED			
FRACTIONAL ±1/16		ENG APPR.			
ANGULAR: MACHINED ±0.5°		MFG APPR.			
BEND ±2°		Q.A.			
TWO PLACE DECIMAL ±.01		COMMENTS:			
THREE PLACE DECIMAL ±.005					
INTERPRET GEOMETRIC TOLERANCING PER: ANSI Y14.5					
MATERIAL					
SEE NOTES					
NEXT ASSY	USED ON	SEE NOTES			
APPLICATION		DO NOT SCALE DRAWING			
SIZE	DWG. NO.	REV	TITLE:		
C	311-002	A	FINISHED WALL OPENING, CRD311		
SCALE: 1:12		WEIGHT:	SHEET 1 OF 1		